

WATER HEATERS FOR EVERY APPLICATION

ELECTRIC ■ STEAM ■ BOILER WATER

Explosion Proof



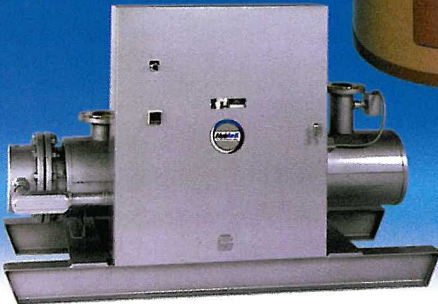
Deionized Water



Instantaneous Hot Water



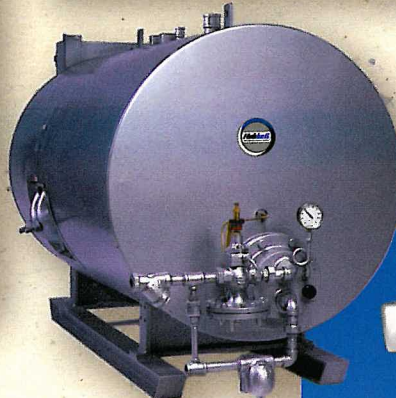
Circulation



Storage



Steam Fired



Point-Of-Use



Hubbell™
The Electric Heater Company

P.O. Box 288 ■ Stratford, CT 06615-0288 ■ Phone: (203) 378-2659 ■ Fax: (203) 378-3593
E-Mail: info@hubbellheaters.com ■ Internet: <http://www.hubbellheaters.com>

PRODUCT OVERVIEW

LOW CAPACITY ELECTRIC

Model E

Small Capacity

Vertical design, 6 -120 gallon capacity. Up to 6 KW in all single phase voltages. Available in cement lined steel or copper-silicon tank.

Model A, B

Boosters

Provides 180°F sanitizing rinse water; 6, 10, 15, or 20 gallon capacity. Up to 58 KW in all single or three phase voltages. Copper-silicon tank.

Model CE110

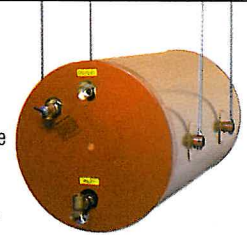
Small Point-of-Use

Installs directly under fixture, 1 gallon capacity. 1000 or 450 Watts, 120 Volt, 1 Phase. Stainless steel tank provides maximum longevity.

Model HE, HSE

Horizontal, Ceiling Hung

Horizontal heater installs above the ceiling. 20 or 30 gallon capacity. Up to 12 KW in all single or three phase voltages. Cement lined steel tank.



HIGH CAPACITY ELECTRIC

Model SE

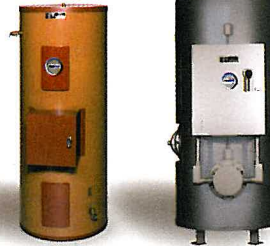
Small Capacity

Vertical design, 6 -120 gallon capacity. Up to 58 KW in all three phase voltages. Available in cement lined steel or copper-silicon tank.

Model SH

Large Capacity

Vertical or horizontal packaged heaters, 80 - 5000 gallon capacity. Full range of KW ratings in all single or three phase voltages. ASME IV Stamped



SPECIAL PURPOSE HEATERS

Model HD

DI Water Semi-Instantaneous

Compact DI water heater, 10 or 20 gallon capacity. Up to 58 KW in all single or three phase voltages. Type 316L stainless steel construction.

Model D

DI Water Storage

Storage DI water heater, 1 - 120 gallon capacity. Up to 58 KW in all single or three phase voltages. Type 316L stainless steel construction.

Model V

Process Systems and Industrial

All purpose industrial grade process water heater, 6 - 20 gallon capacity. Up to 58 KW in all single or three phase voltages. Numerous optional features available.

Model ER

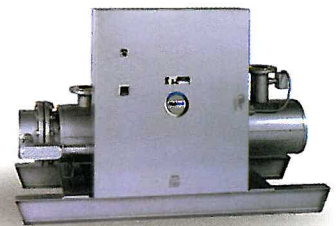
Explosion Proof

For use in hazardous locations, 10 - 120 gallon capacity. Up to 58 KW in all single or three phase voltages. Available in cement lined steel or copper-silicon tank.

Model CR

Circulation (Instantaneous)

Instantaneous heater for large commercial/ industrial applications. 25 - 1600 KW in all single or three phase voltages. Heavy duty construction.



STEAM FIRED

Model ST

Large Capacity

Vertical or Horizontal packaged heater, 80 - 5000 gallon capacity. Steam operating controls factory supplied. For large commercial/industrial applications.

Model PS

Small Capacity

Vertical heater, 80 - 120 gallon capacity. Steam operating controls factory supplied. For low demand/ recovery applications. Cement lined steel tank

Model F

Instantaneous

Vertical heater requires approx. 7 Sq.Ft. of floor space. No storage capacity. Heat up to 120 GPM water. Steam operating controls factory supplied.



INDIRECT/DIRECT FIRED

Model BW

Water to Water

Vertical or horizontal packaged heater, 80 - 5000 gallon capacity. Utilizes boiler water or HTHW to heat potable water. For large commercial/industrial applications.

Model TransFlow

Indirect Fired

Vertical heater, 30 - 120 gallon capacity. Utilizes boiler water to heat potable water. Removable coil, cement lined steel tank

Model SLN

Solar Heaters

Vertical heater, 30 - 120 gallon capacity. Utilizes existing solar water to transfer heat to potable water. Back-up electric heater available. Cement lined steel tank

Model DF

Gas/Oil Fired

Vertical packaged Natural Gas, LP Gas, and Oil fired water heaters. 140 - 1500 gallon capacity. Forced draft non-condensing burner results in 83% efficiency. ASME IV stamped and UL listed.



MARINE WATER HEATERS

Model ME

Small Capacity, 1 Phase

Vertical design, 6 - 120 gallon capacity. Up to 6 KW in all single phase voltages. Available in cement lined steel or copper-silicon tank. USCG and ABS approved.

Model MSE

Small Capacity, 3 Phase

Vertical design, 6 -120 gallon capacity. Up to 58 KW in all three phase voltages. Available in cement lined steel or copper-silicon tank. USCG and ABS approved.

Model MSH

Large Capacity

Vertical or horizontal packaged heater, 80 - 3000 gallon capacity. Electric, Steam, or combination Steam/Electric powered. USCG and ABS approved.

Model 177

Naval

Water heaters designed specifically for installation onboard all types of Naval vessels. Built to the requirements of MIL-H-965 including shock and vibration.



Hubbell
The Electric Heater Company

P.O. Box 288 ■ Stratford, CT 06615-0288 ■ Phone: (203) 378-2659 ■ FAX: (203) 378-3593
E-mail: info@hubbellheaters.com ■ Internet: <http://www.hubbellheaters.com>